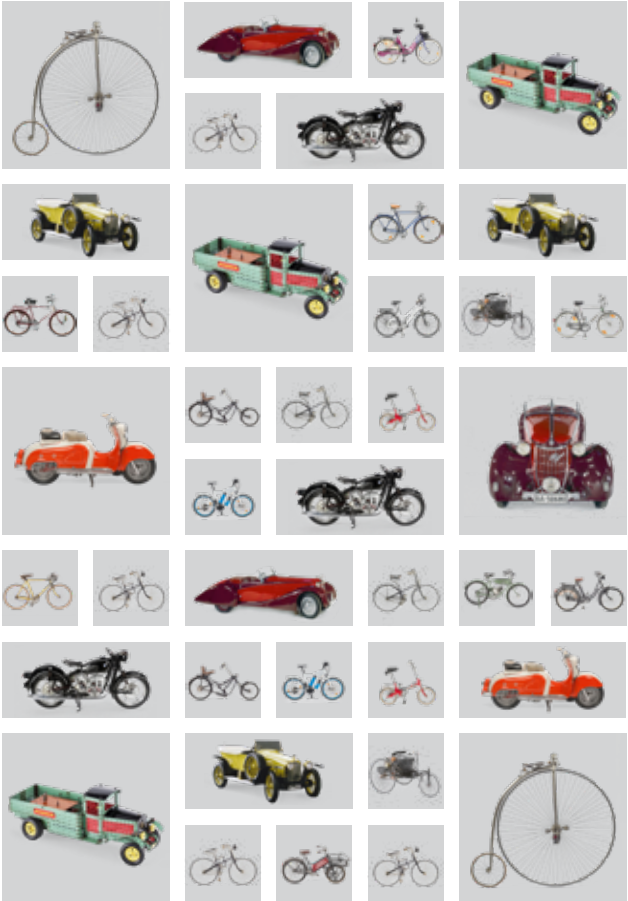




ENGLISH

# VERKEHRS ZENTRUM



# A

# ABO



On the Theresienhöhe, overlooking the Oktoberfest grounds, the Deutsches Museum presents its unique collection of land vehicles: from racing cars to steam locomotives, from penny-farthings to ICE trains – here you can learn all about how people have travelled around the world through the ages. The three listed exhibition halls date from 1908 and are dedicated to urban transport, travel and mobility. Visitors can see the steam locomotive “Puffing Billy” and ride in a carriage along a bumpy road in the simulator. A highlight of the collection is the world’s first gasoline car!

For more information, please visit:

<https://www.deutsches-museum.de/en/verkehrszentrum>

# DARD

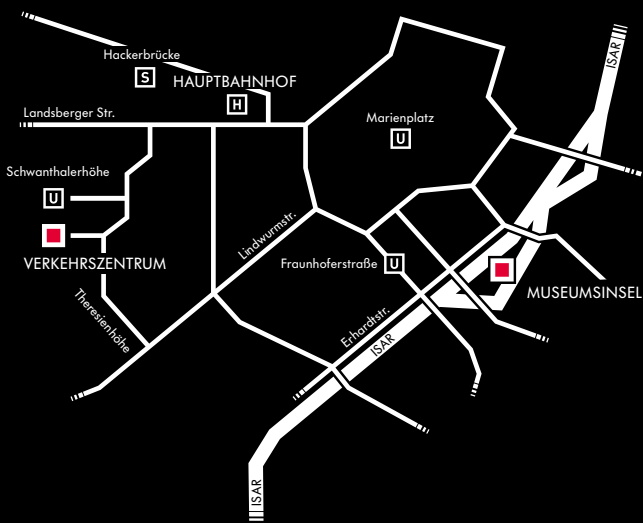


## TICKETS

Adults	€8
Discounted	€5
Family ticket	€17
Pupils	
Apprentices	
Students	€5

Free admission for Deutsches Museum members and children under 6 years old.

# HOW TO FIND US



## PUBLIC TRANSPORT

- |         |   |
|---------|---|
| U4, U5  | Schwanthalerhöhe stop                                     |
| Bus 53  | Schwanthalerhöhe stop                                     |
| Bus 134 | Theresienhöhe stop  |
| S-Bahn  | Hackerbrücke stop, from there<br>approx. a 15-minute walk |

## OPENING HOURS

Daily from 9:00 to 17:00

For exceptions, please visit:

[www.deutsches-museum.de/en/verkehrszentrum](http://www.deutsches-museum.de/en/verkehrszentrum)

Deutsches Museum   
VERKEHRSZENTRUM

Am Bavariapark 5, 80339 Munich

Telephone +49 (0)89 2179 333

[www.deutsches-museum.de/en/verkehrszentrum](http://www.deutsches-museum.de/en/verkehrszentrum)